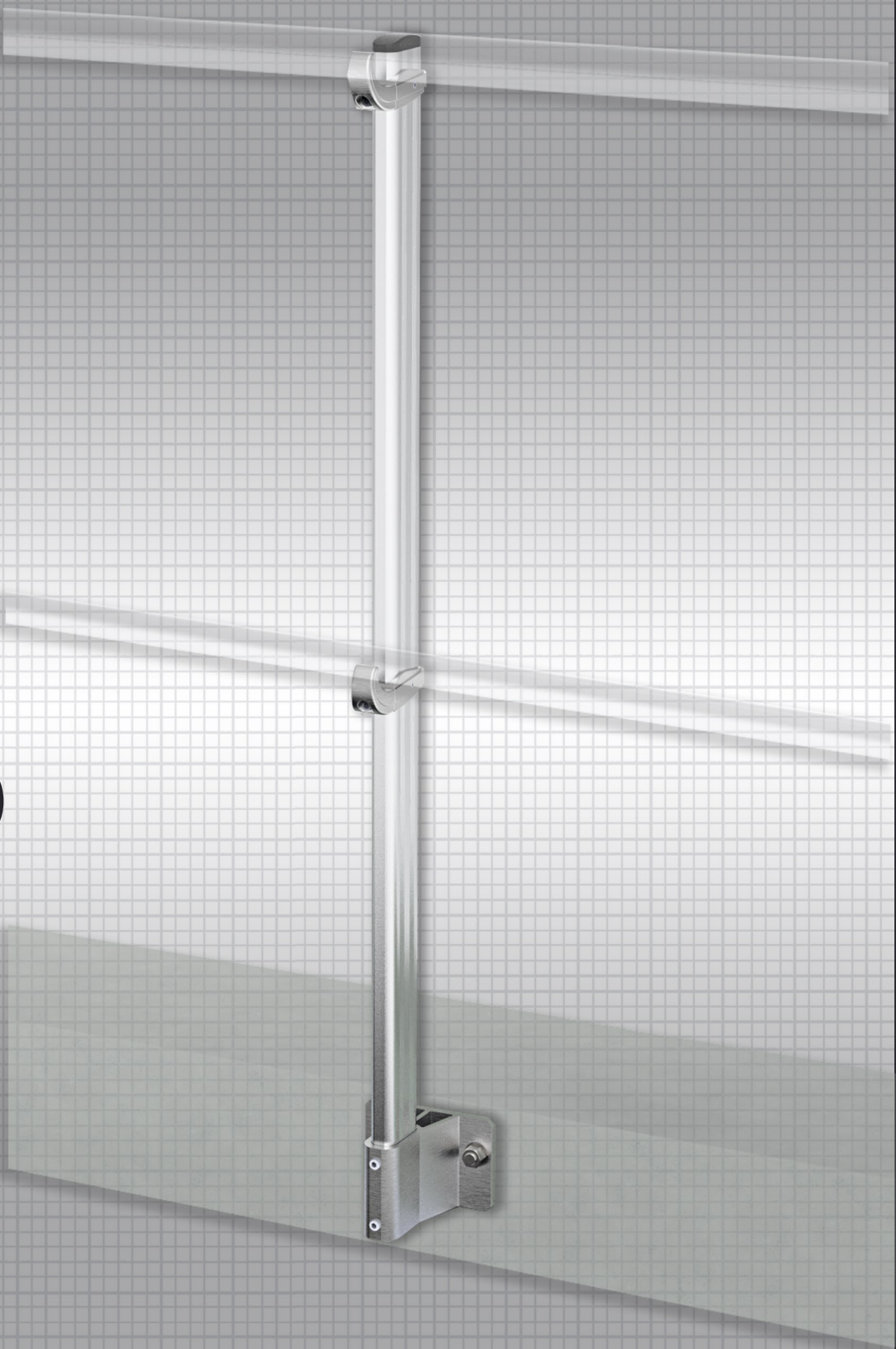
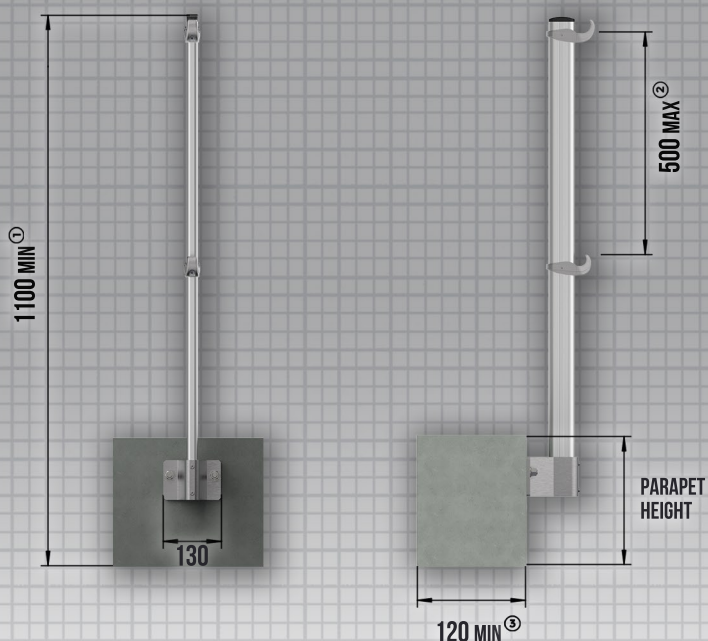


WALL BRACKET

ROOFTOP

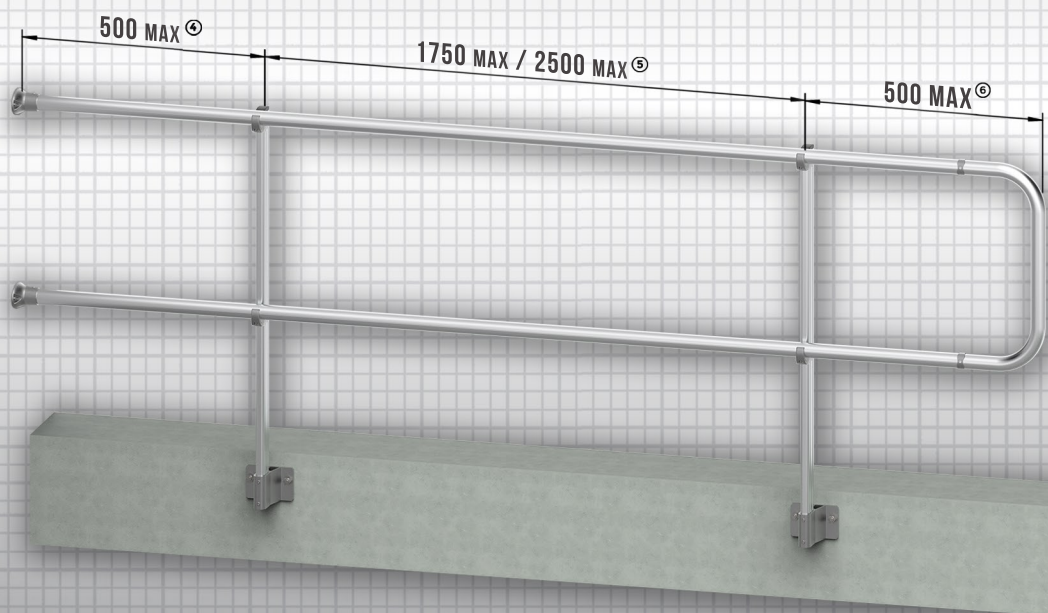


EN14122-3 : 2016



FRONT VIEW

SIDE VIEW



ISOMETRIC VIEW

Parapet H.

Upright H.

201 to 300 mm

900 mm

301 to 400 mm

800 mm

401 to 500 mm

700 mm

501 to 600 mm

600 mm

601 to 700 mm

500 mm

701 to 800 mm

400 mm

LONGDYES
WORKSITE SAFETY

WALL BRACKET

EN14122-3:2016

When a parapet is lower than the safety standards prescribe to safely access a roof, a guardrail can be mounted to raise the barrier and create a safe zone. This type of guardrail is either mounted on top or on the inside of the parapet or wall.

① The minimum vertical height of post is 1100mm

② The maximum height between handrail and kneerail is 500mm

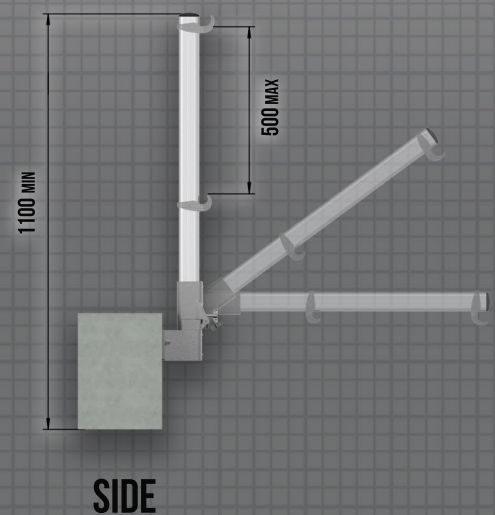
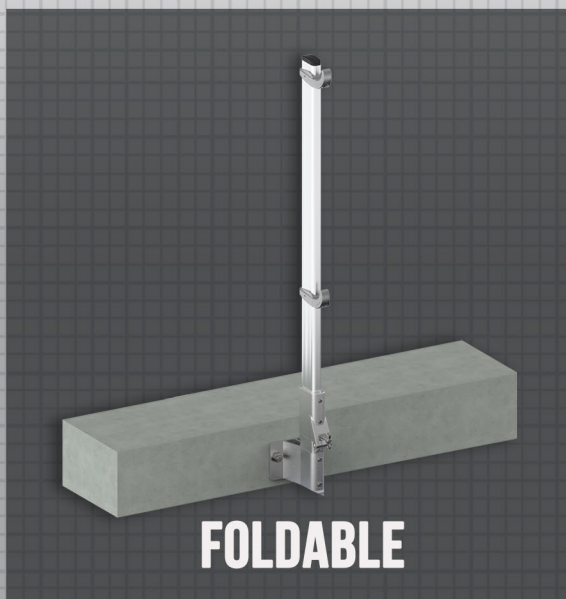
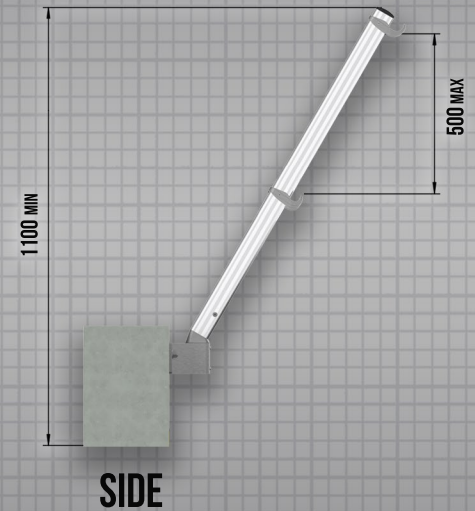
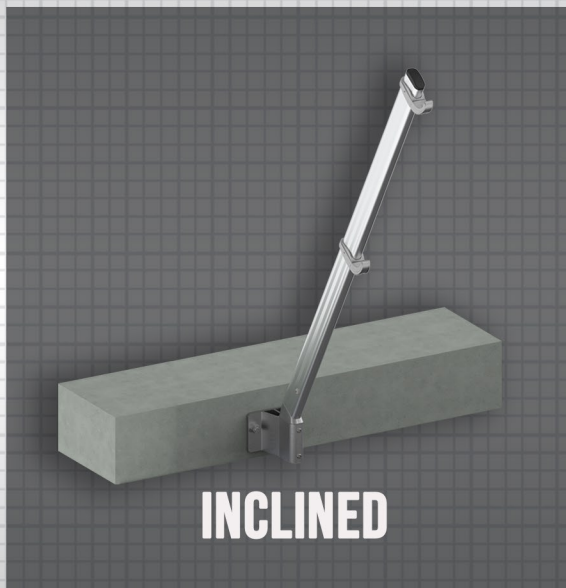
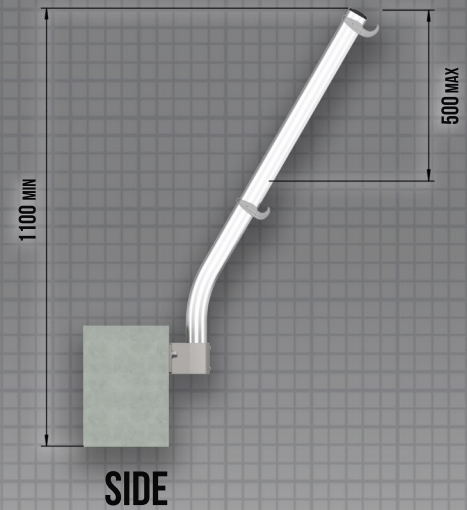
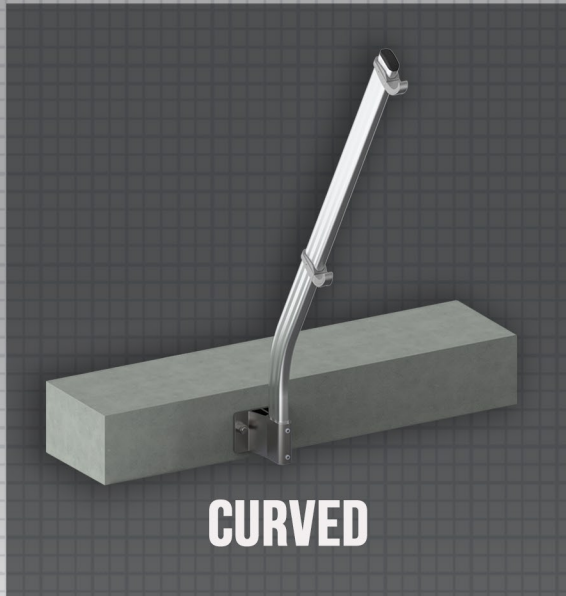
③ The minimum thickness of parapet should be greater than 120mm

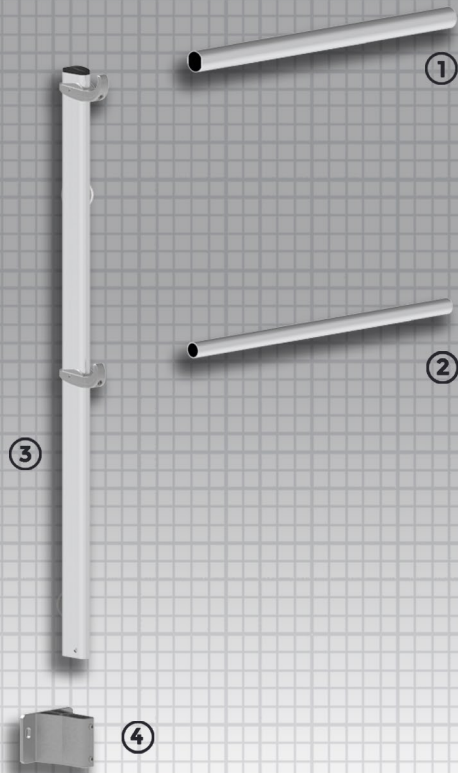
④ The maximum distance between wall and first post is 500mm

⑤ The maximum allowed interval is 1750mm/2500mm(EN14122-3/EN13374:2013)

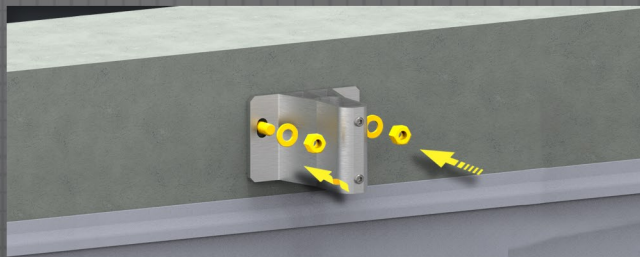
⑥ The maximum distance between last post and free end is 500mm

Wall Bracket Guardrail Also Pairs With...



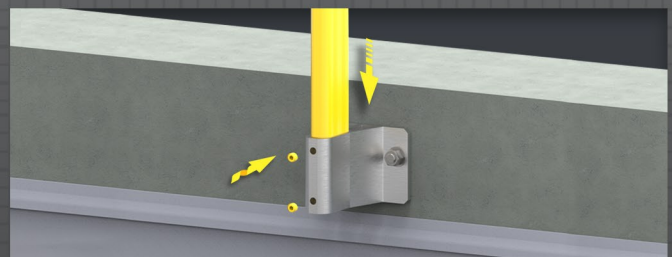
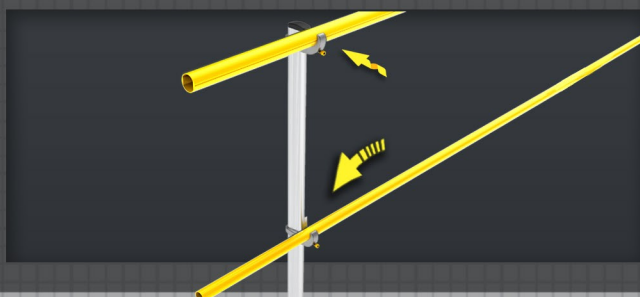


- ① **Handrail**
φ40 mm tube
- ② **Kneerail**
φ40 mm tube
- ③ **Upright module**
Tube fixing, profile, plastic cap included
- ④ **Base**
Vertical bracket



STEP 01
Put vertical bracket on side of parapet barrier then fix it by taper screws

STEP 02
Insert upright module into bracket base then fix it by set screws



STEP 03
Put handrail and kneerail onto tube fixing then fix them by tightening screws



1

**WALL
FIXING**



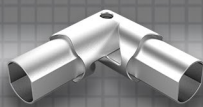
2

**Φ 40MM
RAILING**



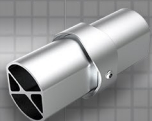
3

**TUBE
FIXING**



4

**VARIABLE
CORNER**



5

**TUBE
JUNCTION**



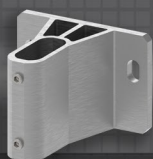
6

**UPRIGHT
MODULE**



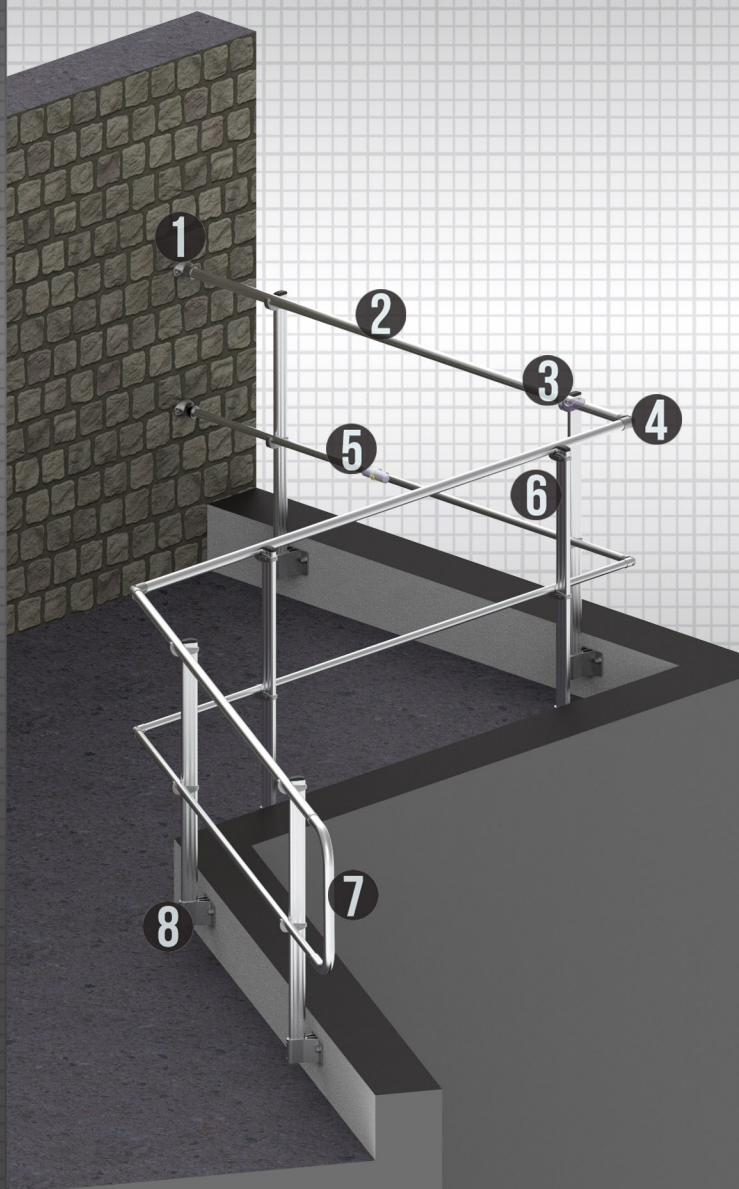
7

**FREE
ENDS**



8

**VERTICAL
BRACKET**



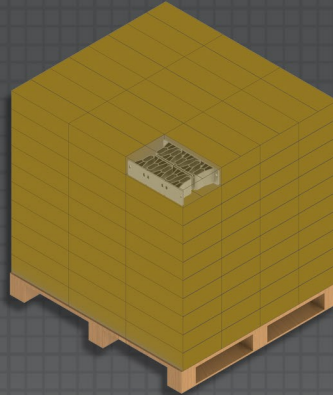
Railing pack

5-pcs per pack in two different specs,
length 3.0m and 5.8 m



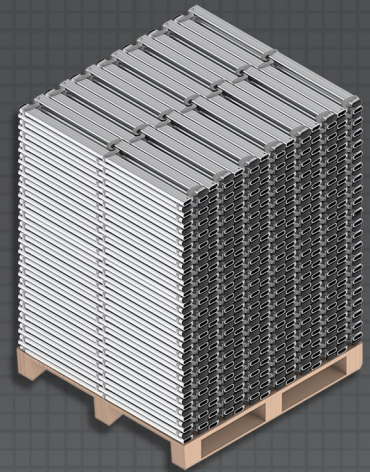
Accessories box

Tube junction, variable corner,
wall fixing, free ends included



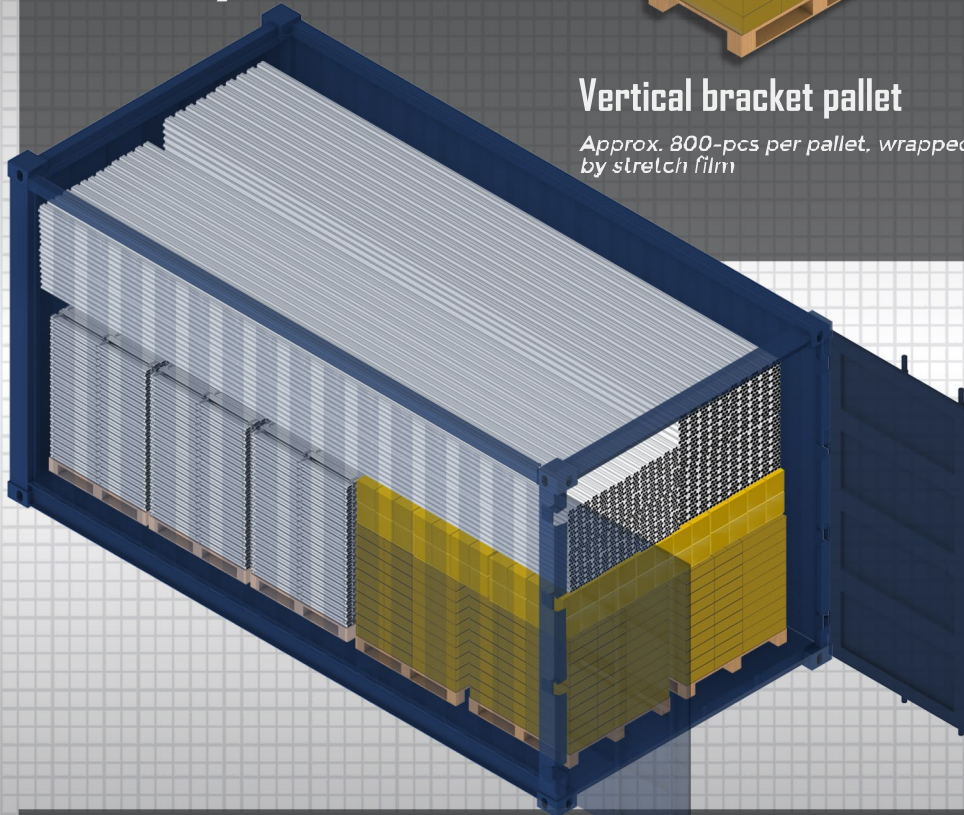
Vertical bracket pallet

Approx. 800-pcs per pallet, wrapped
by stretch film



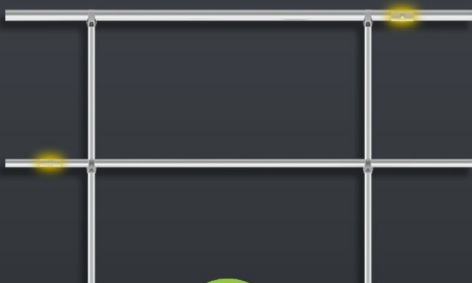
Upright module pallet

Approx. 552-pcs per pallet, wrapped
by stretch film



A 20' GP container

Capable of loading approx. 4000
meters rooftop guardrail system,
in standard situation



TUBE JUNCTION RECOMMENDED POSITIONING



NOT RECOMMENDED POSITIONING



www.longdyes.com



OFFICE

Room 3006, Tower 3, Excellence Century Center,
No.31 Longcheng Road, Qingdao, China

PHONE: +86 532 83932416
MAIL: info@longdyes.com

FACTORY

No.8 Baolilai Road,
Qingdao, China