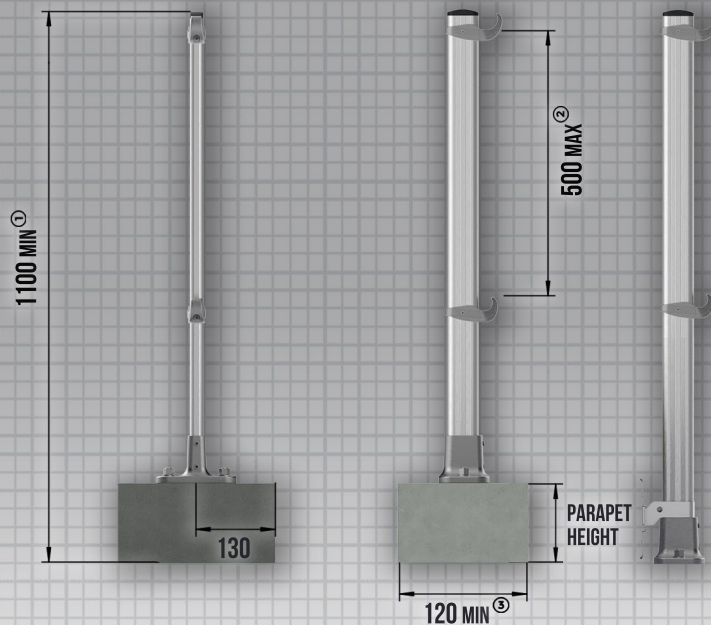


# PARADET RAILING

ROOFTOP



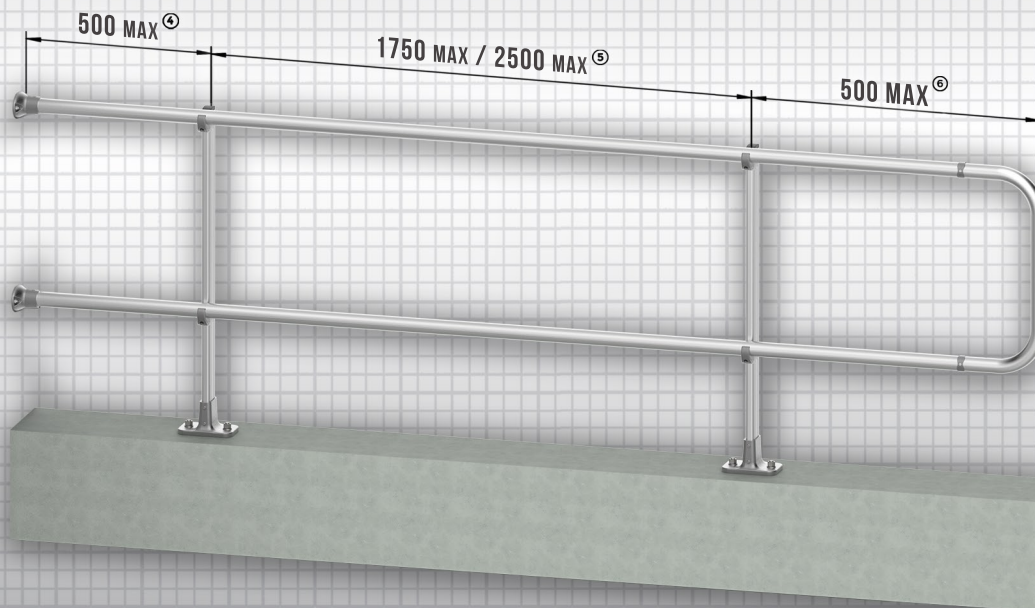
EN14122-3 : 2016



**FRONT VIEW**

**SIDE VIEW**

Parapet H.	Upright H.
201 to 300 mm	900 mm
301 to 400 mm	800 mm
401 to 500 mm	700 mm
501 to 600 mm	600 mm
601 to 700 mm	500 mm
701 to 800 mm	400 mm



**ISOMETRIC VIEW**

**LONGDYES**  
**PARPET RAILING**  
EN14122-3:2016

The parapet railing system is designed for areas where non-penetrating guardrail would not work properly. The parapet railing system allows for the installer to connect to the existing parapet without penetrating the roof membrane and provides a barrier that does not become a trip hazard while working around equipment.

- ① The minimum vertical height of post is 1100mm
- ② The maximum height between handrail and kneerail is 500mm
- ③ The minimum thickness of parapet should be greater than 120mm
- ④ The maximum distance between wall and first post is 500mm
- ⑤ The maximum allowed interval is 1750mm/2500mm(EN14122:3/EN13374:2013)
- ⑥ The maximum distance between last post and free end is 500mm

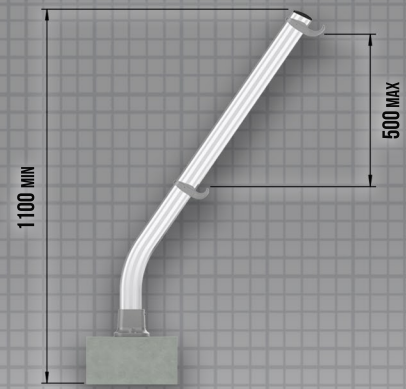
## Parapet Guardrail Also Pairs With...



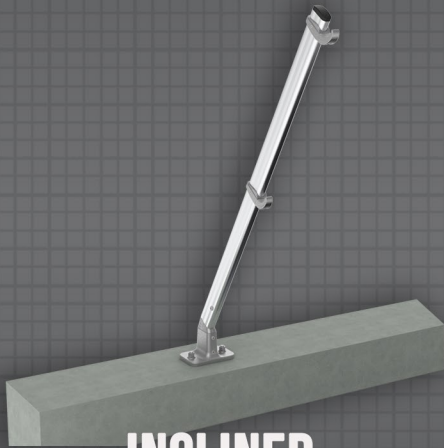
**CURVED**



**FRONT**



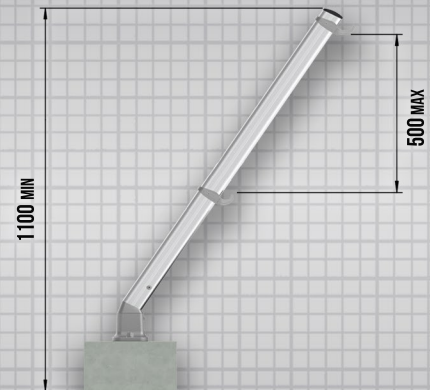
**SIDE**



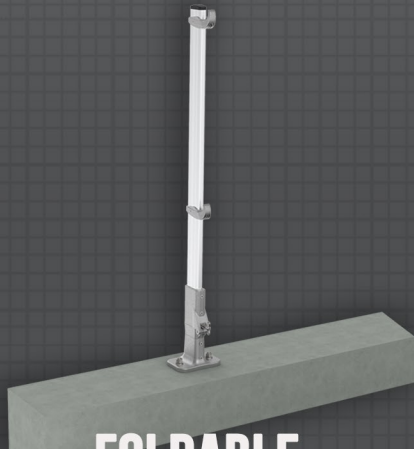
**INCLINED**



**FRONT**



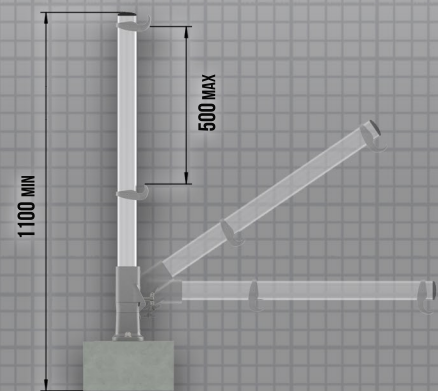
**SIDE**



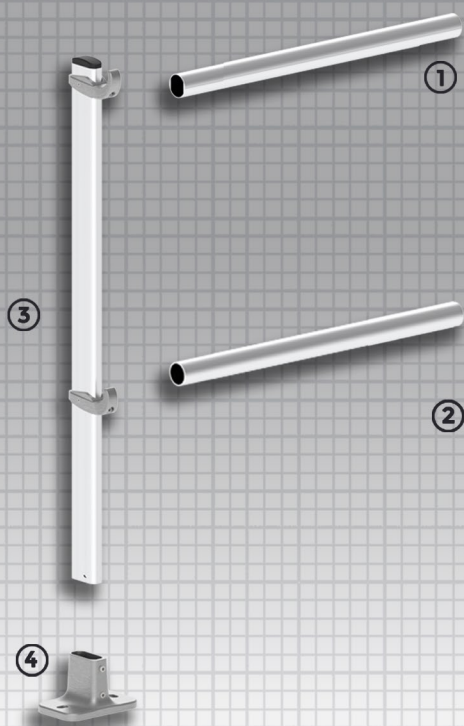
**FOLDABLE**



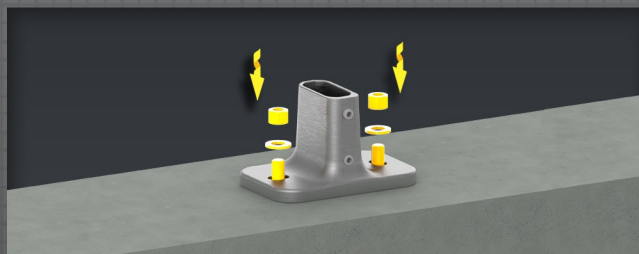
**FRONT**



**SIDE**

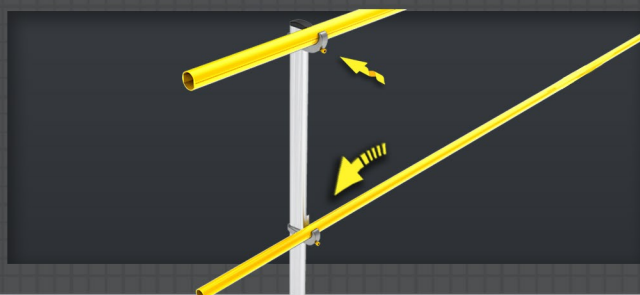
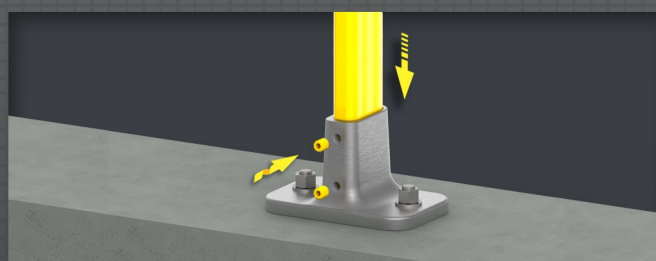


- ① **Handrail**  
φ40 mm tube
- ② **Kneerail**  
φ40 mm tube
- ③ **Upright module**  
Tube fixing, profile, plastic cap included
- ④ **Base**  
Horizontal bracket



**STEP 01**  
Put horizontal bracket onto parapet then  
fix it by taper screws

**STEP 02**  
Insert upright module into base  
then fix it by set screws



**STEP 03**  
Put handrail and kneerail onto tube fixing  
then fix them by tightening screws



**1**

**WALL  
FIXING**



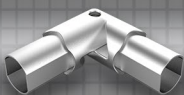
**2**

**Φ40MM  
RAILING**



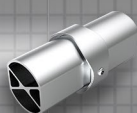
**3**

**TUBE  
FIXING**



**4**

**VARIABLE  
CORNER**



**5**

**TUBE  
JUNCTION**



**6**

**UPRIGHT  
MODULE**



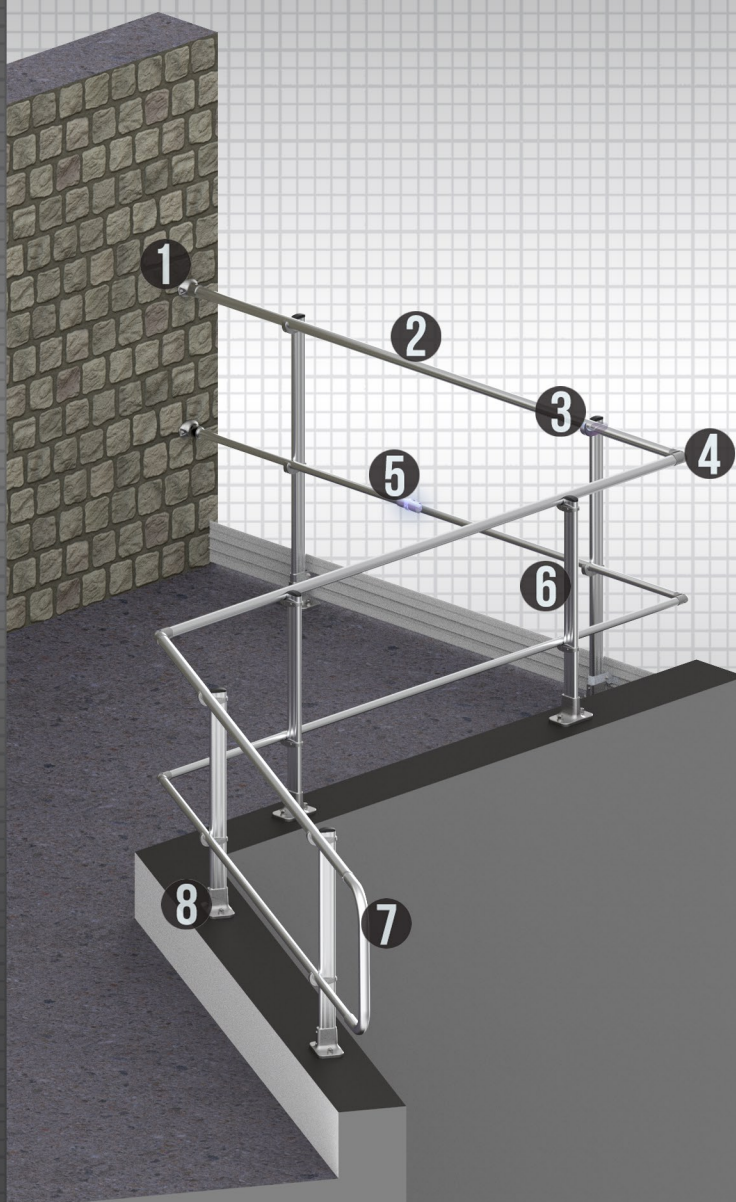
**7**

**FREE  
ENDS**



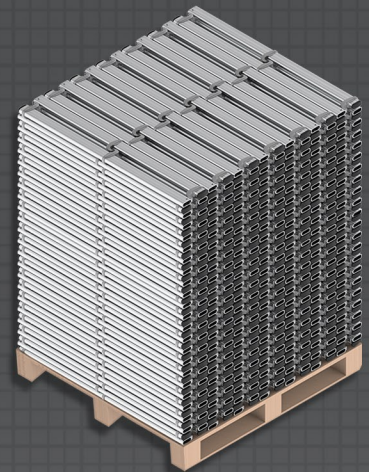
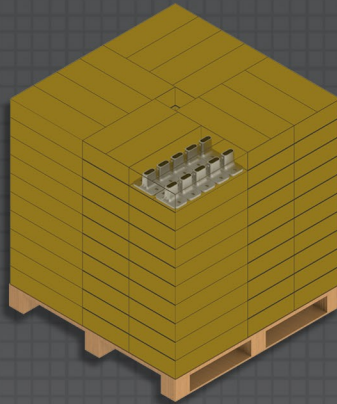
**8**

**HORIZONTAL  
BRACKET**



## Railing pack

5-pcs per pack, wrapped by stretch film



## Accessories box

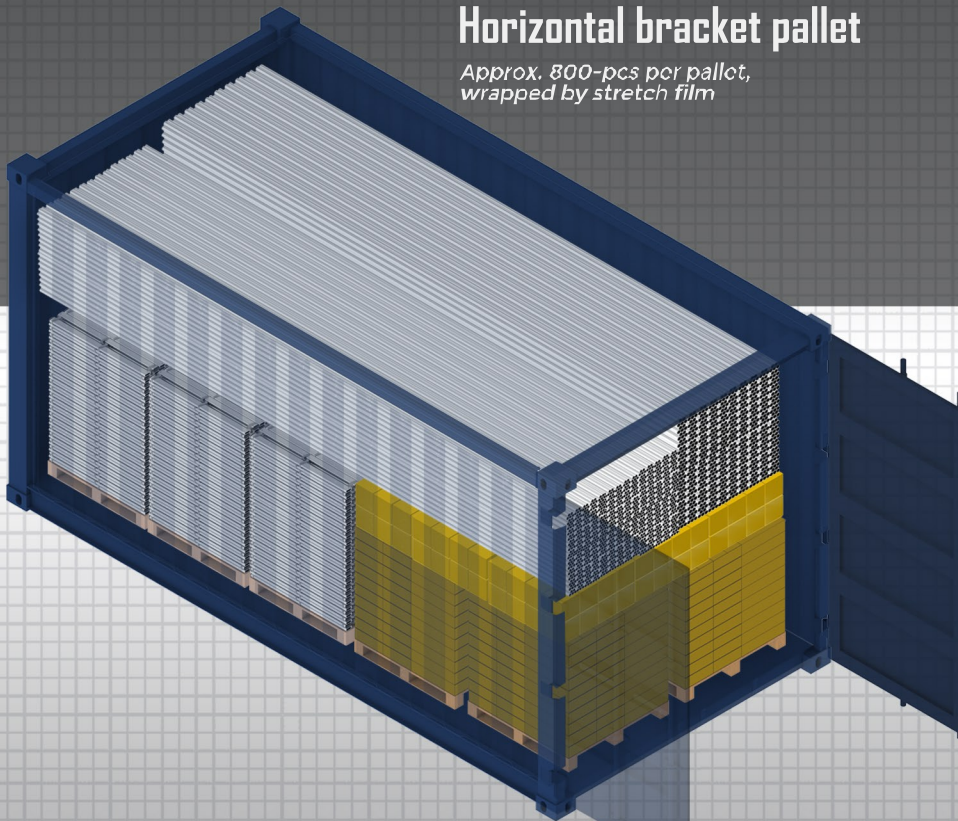
Tube junction, variable corner, wall fixing, free end included

## Horizontal bracket pallet

Approx. 800-pcs per pallet, wrapped by stretch film

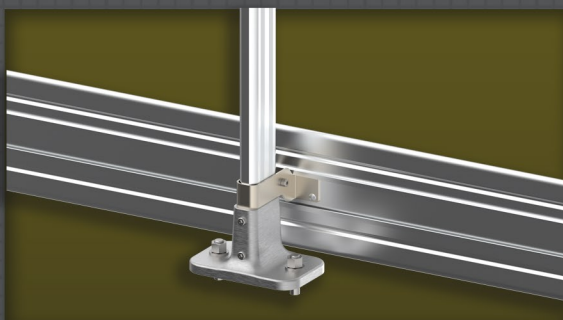
## Upright module pallet

Approx. 552-pcs per pallet, wrapped by stretch film



## A 20' GP container

Capable of loading approx. 4000 meters rooftop guardrail system, in standard situation

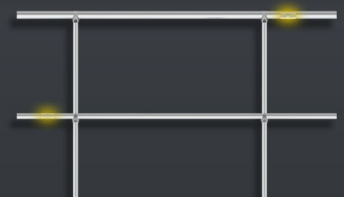


## Toeboard (Optional item)

When horizontal bracket need to be fixed directly onto floor, toeboard is required. Prevent small objects slip off from the edge. Prevent personal slip off from the edge



TUBE JUNCTION  
RECOMMENDED POSITIONING



NOT  
RECOMMENDED POSITIONING





[www.longdyes.com](http://www.longdyes.com)



## OFFICE

Room 3006, Tower 3, Excellence Century Center,  
No.31 Longcheng Road, Qingdao, China

PHONE: +86 532 83932416  
MAIL: [info@longdyes.com](mailto:info@longdyes.com)

## FACTORY

No.8 Baolulai Road,  
Qingdao, China